



**Please note the following updated guidance which MUST be adhered to from 5<sup>th</sup> November 2020:**

**Guidance for Worshippers/Visitors:**

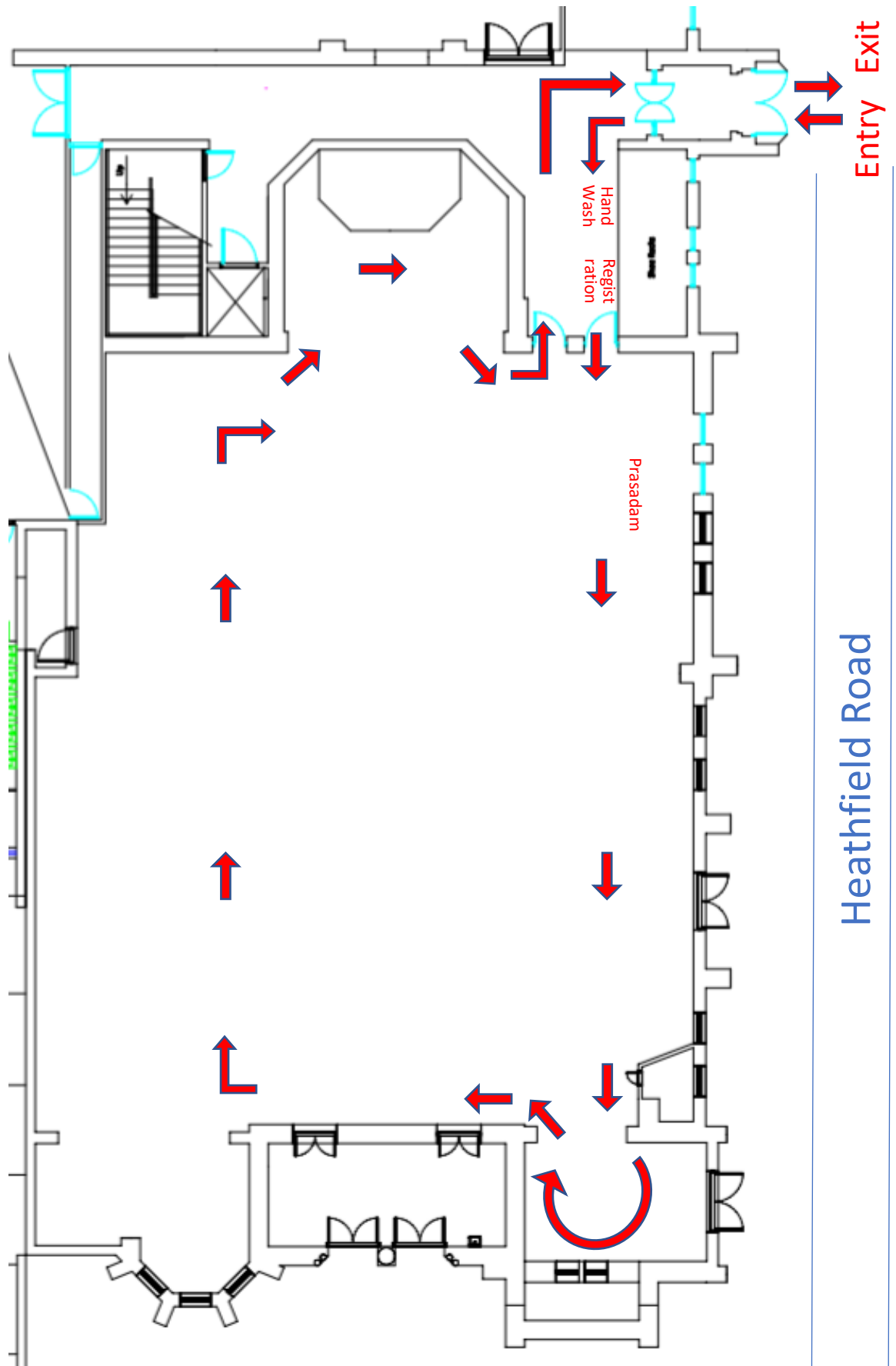
**Before Visiting you MUST consider the following**

- **DO NOT VISIT** if you, or anyone you have been in contact with, have any of the following COVID19 symptoms:
  - **A new, continuous cough** - this means you've started coughing repeatedly,
  - **High Temperature** - you feel hot to touch on your chest or back,
  - **Loss of Sense/Smell** - if you cannot smell/taste, or things smell or taste different to normal
- **Vulnerable people** as defined by the NHS guidelines, including those over 70 years of age are recommended **NOT** to attend.
- **Face coverings** are mandatory unless you have a legitimate reason not to wear one as advised by NHS guidelines.
- **Reduced opening hours** will be in place from 9am-12pm and 5pm-7pm daily, with extended hours on certain festival days.
- **Opening is for private worship only** and Aarti will not be carried out in public.

## **During your visit you MUST do the following**

- **Follow the one-way system indicated by the mandir hall map/plan.**
- **2m social distancing will be mandatory between individuals and householders/support bubbles. This may be reduced to 1m during busy periods.**
- **Members of one Household or support bubble MUST stay together, including children.**
- **Wash hands when entering the mandir with provided anti-bacterial hand wash for at least 20 seconds as per NHS guidelines.**
- **Only one person or household/support bubble allowed into the shoe rack area.**
- **Provide your personal details immediately after washing hands upon entry by filling in the provided registration slips (optional but recommended). For families/support bubbles just one of the family member details is acceptable. Alternatively, you may simply scan that NHS Track and Trace QR code using the NHS Covid-19 App.**
- **1m spaced squares will be marked on the main floor area to aid social distancing. Two complete empty squares are to be maintained between individuals or householders/support bubbles, reduced to one square during busy/festival days.**
- **Do not stay for longer than necessary.**
- **Keep to the left when walking down any lobbies or hallways.**
- **Prasadam must be collected and dropped off at the dedicated Prasad point.**
- **Do not touch any Murtis or Shivaling when doing darshan.**
- **Do not touch properly belonging to others.**
- **When doing darshan, you MUST remain standing (namaskar style, no kneeling down or forehead touching the floor).**
- **Do not use any Bells/Gongs/Instruments.**
- **If during your visit you start to feel unwell with COVID symptoms, you MUST inform the priest or any member of staff/trustee to identify yourself and IMMEDIATELY return to your home to self-isolate as per government advice.**

# One-Way Entry/Exit MAP



Brecon Road

Heathfield Road